

WORDPRESS FUNDAMENTALS

Mark DuBois

Mark@4WebPro.org

Think of this as a discussion, not lecture!

TOPICS TONIGHT

WordPress fundamentals

- Getting started (pages, posts, oh my)
- What I wish I knew when starting
- Useful sites

Advanced WordPress

- Installing a virtual testing environment
- Hands on (you brought your laptop, right?)
- Next month – build a plugin and test it

More Discussion

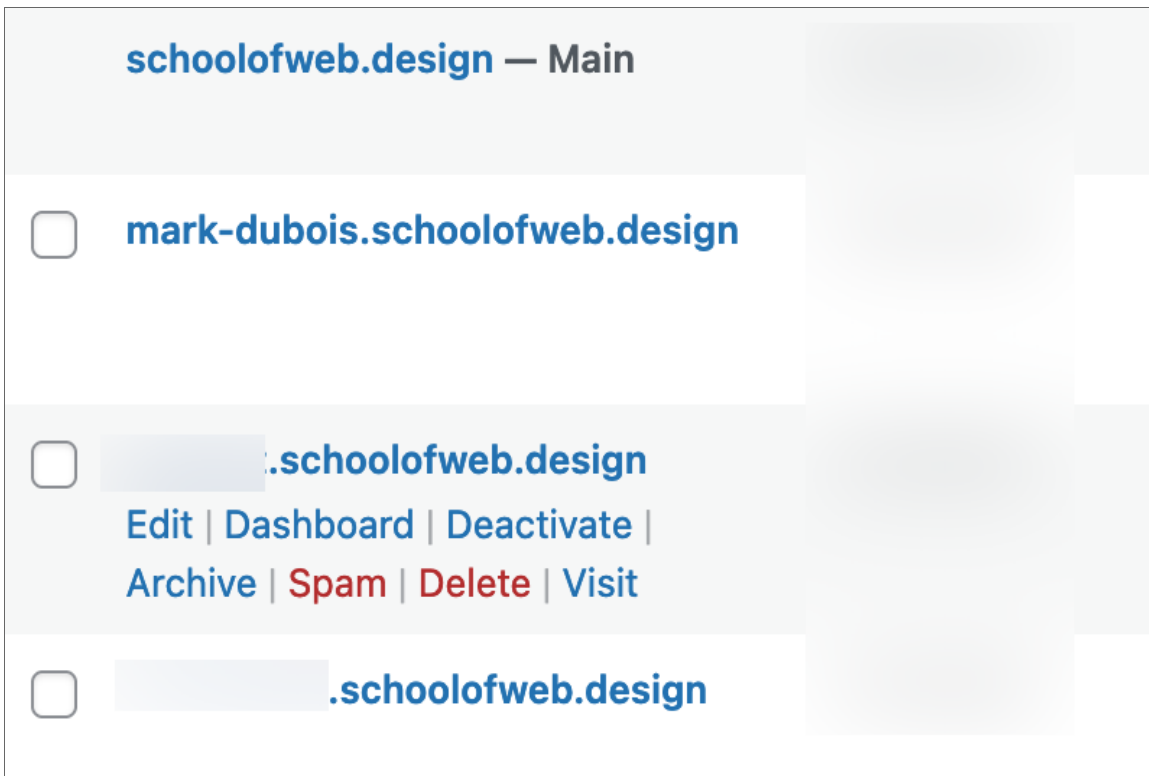
GETTING STARTED

WordPress?

- Powers roughly 40% of websites these days
- Scalable (Taylor Swift named Time POY) 100K requests/ second
- **WordPress.com** (managed hosting)
 - **Automattic**
- **WordPress.org** (you need a host)
- Multi-user WordPress

GETTING STARTED (2)

Example of part of a WP Multi-site environment (subdomains or / are options when initially creating).



GETTING STARTED (3)

Basics?

- Pages
- Posts
- Plugins
- Themes

GETTING STARTED (4)

- Installation and hosting discussion
- Initial configuration decisions discussion
- Backup and recovery discussion
- Security (plugins) discussion

WHAT I WISH I KNEW WHEN I STARTED

- White screen of death is not that big a deal (as long as...)
- Stick with core set of plugins
- Enable auto updates for plugins and themes
- What else?

USEFUL SITES

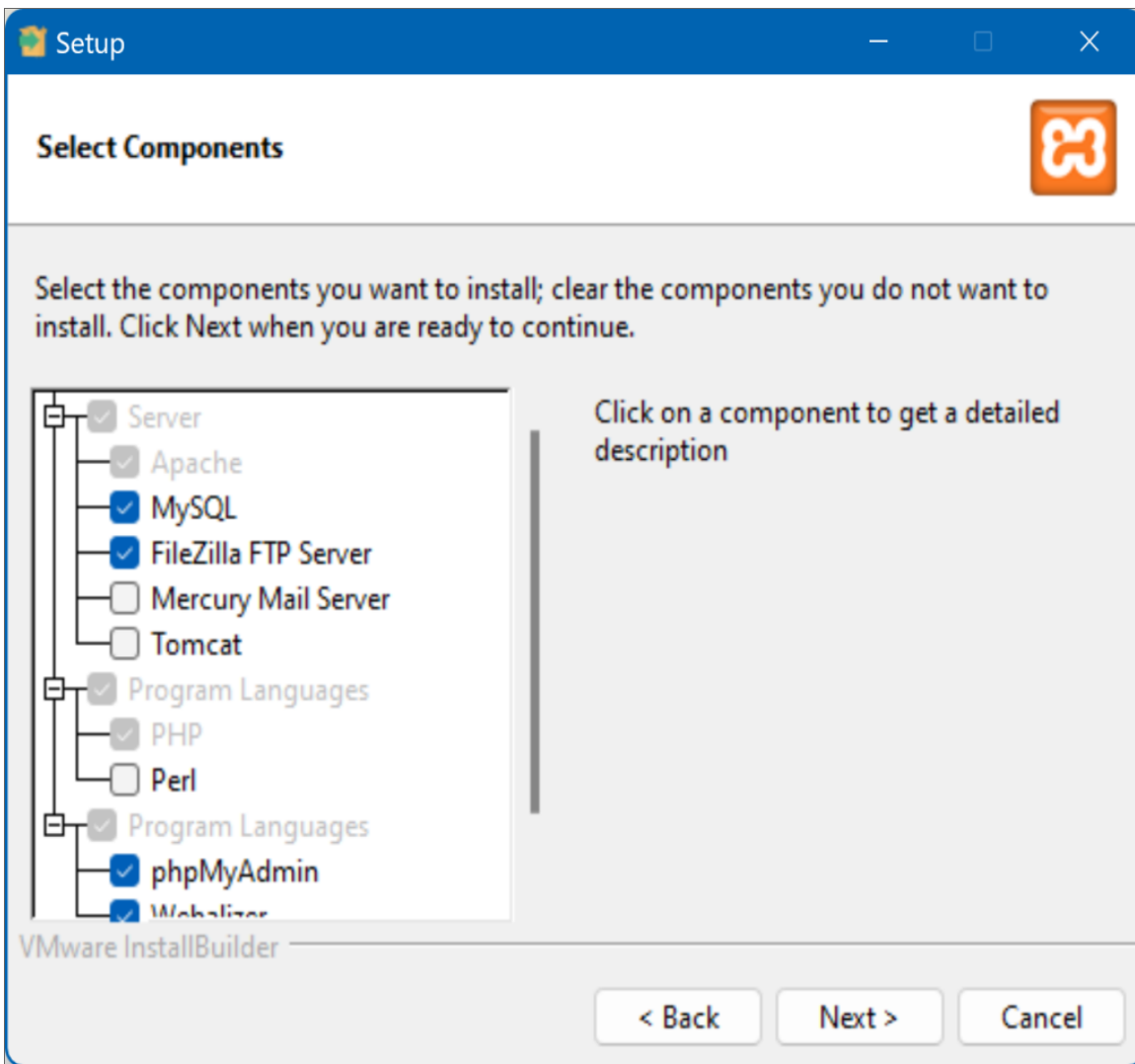
- **WP Beginner**
- **WordPress tutorials**
- What else?

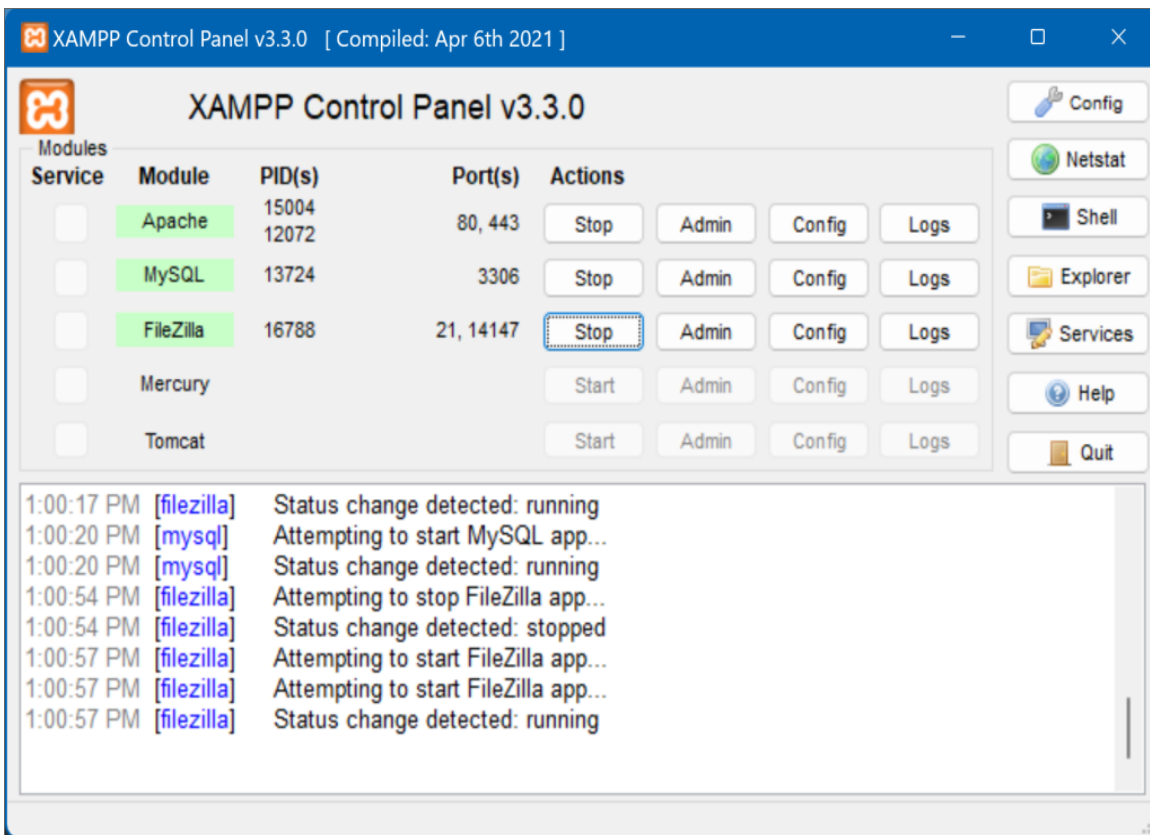
WHAT DO YOU WANT TO KNOW?

- Let's focus on basics for now
- Separate section on more advanced topics later tonight

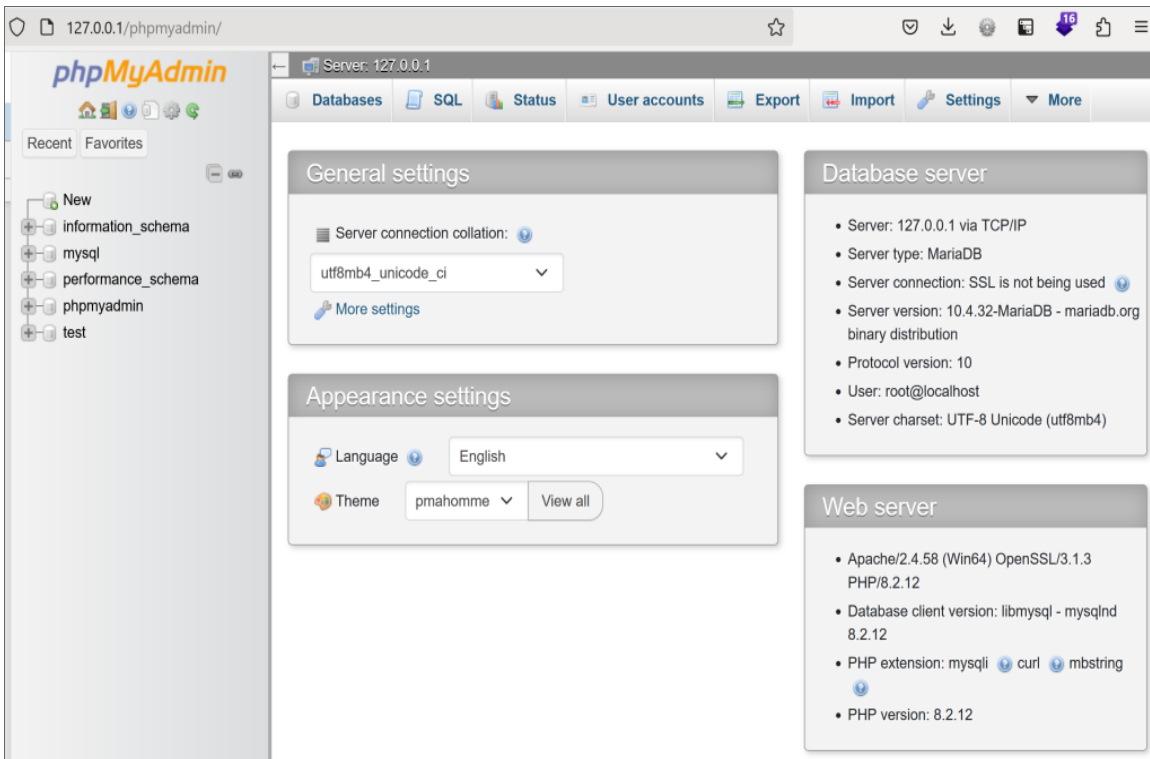
INSTALLING VIRTUAL TESTING ENVIRONMENT

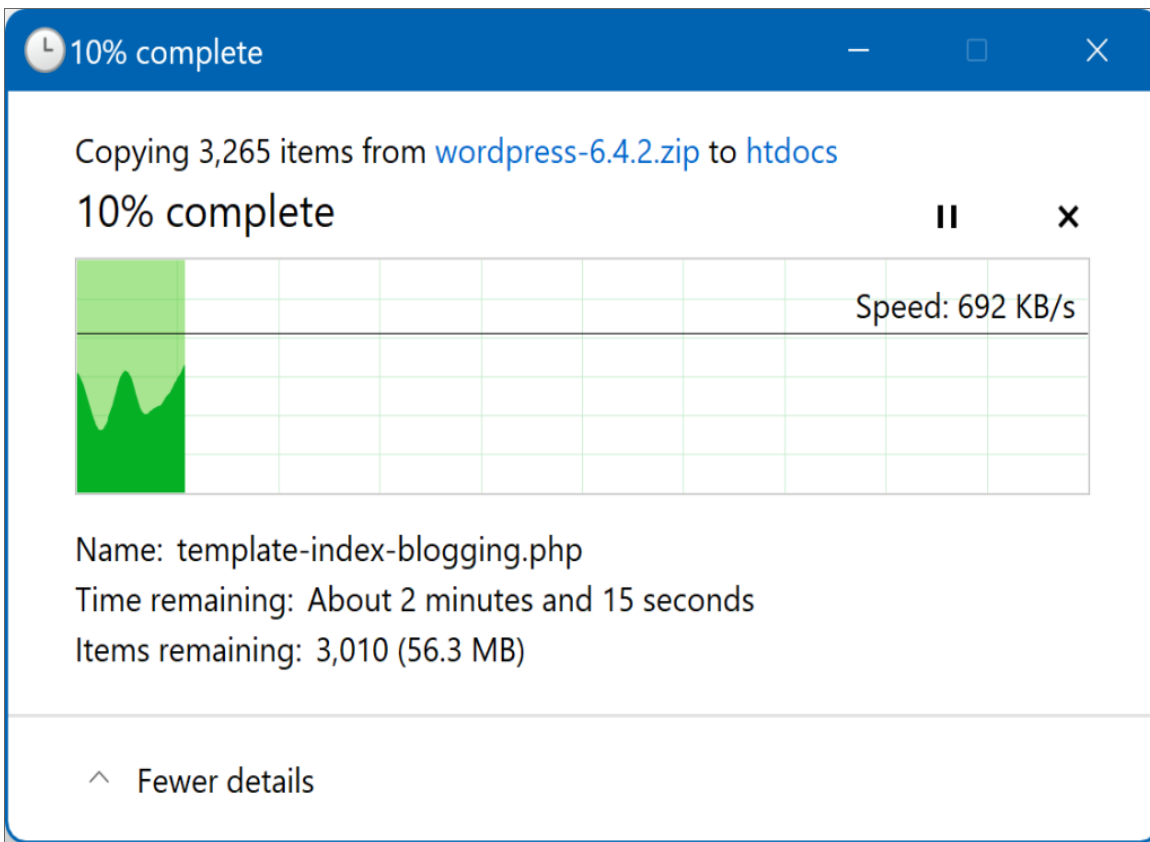
- Many choices
- **WordPress Playground** (browser as server)
- **XAMPP** (one we will use)








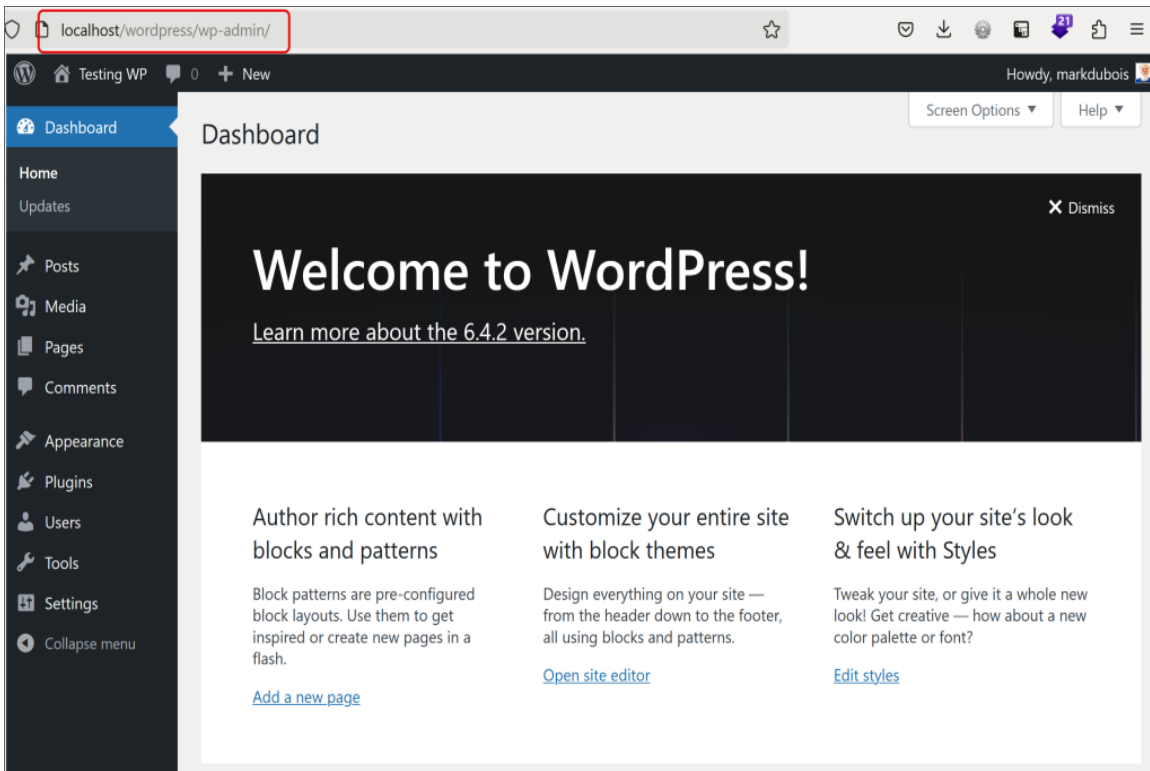






Below you should enter your database connection details. If you are not sure about these, contact your host.

Database Name	<input type="text" value="testwp"/>	
	The name of the database you want to use with WordPress.	
Username	<input type="text" value="root"/>	
	Your database username.	
Password	<input type="password" value="password"/>	<input type="button" value="Show"/>
	Your database password.	
Database Host	<input type="text" value="localhost"/>	
	You should be able to get this info from your web host, if localhost does not work.	
Table Prefix	<input type="text" value="xwp_"/>	
	If you want to run multiple WordPress installations in a single database, change this.	
<input type="button" value="Submit"/>		



WHAT DO YOU WANT TO KNOW?

- Basic information about WordPress
- More advanced aspects of WordPress
- Next month we create a couple plugins (PHP and HTML)

WORDPRESS FUNDAMENTALS

Mark DuBois

Mark@4WebPro.org

Consider joining **WebProfessionalsGlobal.org**